



স্বাস্থ্য ও পরিবার কল্যাণ মন্ত্রণালয়
গণপ্রজাতন্ত্রী বাংলাদেশ সরকার

Physical comorbidity in person with severe mental illness in Bangladesh

REPORT

Supported by



নন কমিউনিকেবল ডিজিটাল হেলথ প্রোগ্রাম
স্বাস্থ্য অধিদপ্তর

Implemented by



জাতীয় মানসিক স্বাস্থ্য ইনস্টিটিউট
শের-ই-বাংলা নগর, ঢাকা।

Copyright
NIMH, Dhaka

Published in 2021

Publisher
Dr Md Faruq Alam for National Institute of Mental Health, Dhaka

Address of Correspondence

Director-Cum-Professor
National Institute of Mental Health
Sher-E-Bangla Nagar, Dhaka-1207
Bangladesh

Email: nimhr@hospi.dghs.gov.bd

www.nimh.gov.bd

Professor Dr Md Faruq Alam
email: faruqalam60@gmail.com

CONTENTS

Preface by Principal Investigator for NIMH Team	iii
Contributors to the Report	v
Acknowledgements	vi
Funding and Conflict of Interest	vii
NIMH Team	viii
Summary	1
Introduction	3
Objective	4
Methods	5
Sample size estimation	6
Research instruments used in the study	6
Data collection techniques and procedure in the field	8
Ethical consideration	9
Results	9
Discussion	16
Conclusion	22
Recommendations	23
References	24
Appendix: Questionnaire	30

Preface by Principal Investigator for NIMH Team

When two disorders or illnesses occur in the same person, simultaneously or sequentially, they are described as co morbid. Mental illness is one of the major public health concerns all over the world where low-and middle-income countries encounter higher burden with minimum resources. This burden of mental illnesses can be increasingly threatening as persons with psychological illnesses face different sorts of hindrance while seeking health care for other diseases also. Overlapping of medical conditions with psychiatric conditions put a greater challenge to the healthcare system by creating additional costs. Such challenges are even higher with severe types of mental illness which are more likely to be associated with physical conditions and substance use. According to National Institute of Mental Health, USA, ‘Severe Mental Illness’ can be defined as a mental, behavioral, or emotional disorder resulting in serious functional impairment, which substantially interferes with or limits one or more major life activities. Severe mental illness (SMI) including schizophrenia, bipolar disorder, schizoaffective disorder and major depressive disorder are quite prevalent in the society. Studies also showed that persons with severe mental illness (SMI) have an excess mortality rate, being two or three times as high as that in the general population. A study in India revealed that about 31% of psychiatric patients were living with coexisting physical illness and cardiovascular system (33.3%) was mostly involved in those cases followed by metabolic or endocrine diseases (27%). The recent “National Mental Health Survey of Bangladesh 19” expressed that about 18.7% of Bangladeshis are suffering from different types of mental illnesses and among them 91.1% do not seek medical attention. In Bangladesh Mental illnesses are treated in tertiary care specialized Hospitals and also in general teaching hospitals. The physical health of persons with severe mental illnesses are not only ignored by them but also by the health system. The person with severe mental illness is usually neglected by the society in most of the time and this is likely to be more when he or she is burdened with additional comorbid disorders. Any management option is incomplete without addressing the co morbidity. Premature mortality and disability could be reduced if there were a greater focus on comorbidity.

Currently, some small scales research showed only the comorbid mental illnesses in chronic or non-communicable diseases. To develop effective and sustainable health care delivery model, mental and physical illnesses must be focused together with utmost priority. To achieve sustainable development goals (SDGs) aimed by the government good health and wellbeing of people should be ensured. So to provide effective, holistic and cost effective services to the person with severe mental illness it is necessary to determine the prevalence and types of physical co morbidity in persons with severe mental illness in Bangladesh. National Mental health Policy has been drafted and is under consideration of the Government. Development of Strategic Plan for mental health including substance abuse is in progress. For further strengthening of mental health programs Ministry of Health & Family Welfare (MOH&FW) commissioned National Institute of Mental Health (NIMH), Dhaka to undertake a survey on physical comorbidities among patients with severe mental illness.

Accordingly, NIMH, Dhaka in support of NCDC of DGHS under MOH&FW undertook a initiative to collect information on physical comorbidity among patients with severe mental illness. A team of investigators from NIMH including mental health and public health professionals worked with NCDC to implement the project.

The NIMH Team expresses its sincere gratitude to all individuals, sectors and patients with severe mental illness for their involvement and participation in the study.

Our efforts will be successful if the leadership in mental health in Bangladesh uses the survey data for development of related services in the country.

Professor Dr Md Faruq Alam

Contributors to the Report



জাতীয় মানসিক স্বাস্থ্য ইনস্টিটিউট
শের-ই-বাংলা নগর, ঢাকা।

Dr Md Faruq Alam
Dr Helal Uddin Ahmed
Dr Mohammad Tariqul Alam
Dr Mekhala Sarkar



নন কমিউনিকেশন ডিজিটাল কন্ট্রোল প্রোগ্রাম
স্বাস্থ্য অধিদপ্তর

Dr Rizwanul Karim
Dr Maruf Ahmed Khan

Acknowledgements

“Survey on comorbidity among patients with severe mental illness” was undertaken by National Institute of Mental Health, Dhaka with the active involvement of many individuals during the period of 2019. The project was funded by Non-Communicable Disease Control Program (NCDC) of DGHS under Ministry of Health & Family Welfare (MOH&FW) of the Government of People’s Republic of Bangladesh.

Our heartfelt thanks to all local coordinators who coordinated research activities in their respective study sites in different hospitals of the country.

We express our gratitude to honorable members of NCDC of DGHS.



নন কমিউনিকবেল ডিজিজ কন্ট্রোল
স্বাস্থ্য অধিদপ্তর

Dr ABM Khurshid Alam
Dr AHM Enayet Hossain
Dr Md Robed Amin
Dr Nur Mohammad
Dr Rizwanul karim
Dr Maruf Ahmed Khan

Local Coordinators

1. Dr Mahadab Chandra Mandal, National Institute of Mental Health (NIMH), Dhaka
2. Dr Tanmoy Prokash Biswas, Mental Hospital, Pabna
3. Dr Jhunu Shamsun Nahar, BSMMU, Dhaka
4. Dr Md Azizul Islam, Combined Military Hospital, Dhaka
5. Dr Khaleda Begum, Dhaka Medical College
6. Dr Shoebur Reza Chowdhury, Sir Salimullah Medical College & Mitford Hospital
7. Dr Ramendra Kumar Singha, Sylhet MAG Osmani Medical College
8. Dr Avra Das Bhowmik, Shahid Ziaur Rahman Medical College, Bogura
9. Dr Muhammad Zillur Rahman Khan, SBMC, Barishal
10. Dr SM Fariduzzaman, Khulna Medical College
11. Dr Mohiuddin Shikder & Dr Md Saleh Uddin Sumon, Chittagong Medical College
12. Dr Jotirmoy Roy, Rangpur Medical College

Research Psychiatrists and Research Officers

We are grateful to all Research Psychiatrists, Research Officers, Statistician, Medicine Specialists and other Specialists who were recruited from the study sites.

We are Indebted to all office staffs of NIMH whose support was essential for successful completion of the survey. Survey activities could not be completed without the support of office secretary Mohammad Kamruzzaman Mukul. Computer Support was provided by Anwar Hossain whose service was essential for survey activities.

Our sincere thanks to all patients and their guardians who have taken all the troubles to participate in the study.

National Institute of Mental Health, Dhaka would like to acknowledge supports of all individuals contributing to the activities at different levels of the study.

Funding and Conflict of Interest

This survey has been funded by NCDC department of DGHS under Ministry of Health & Family Welfare of the Government of People's Republic of Bangladesh. National Institute of Mental Health, Dhaka has conducted the survey as a designated institute of the Government for the purpose. The persons involved with the survey are responsible for the views expressed in this document which do not necessarily represent the views or policies of the institutions with which they are affiliated.

NIMH Team

Principal Investigator

Dr Md Faruq Alam

Co-Investigators

Dr Helal Uddin Ahmed

Dr Mohammad Tariqul Alam

Dr Mekhala Sarkar

Summary

Background

Most of the studies in different parts of the world indicate a significant portion of people suffering from mental disorders have physical comorbidities which in turn impair management process. Premature mortality and disability could be reduced if there were a greater focus on comorbidity. There is almost no nationwide data about the prevalence and pattern of the problem in Bangladesh.

Objective

The study was conducted to investigate the prevalence and types of physical comorbidity including substance use among persons with severe mental illness (SMI).

Methods

A hospital based cross-sectional study was conducted among 2200 samples with severe mental illness (SMI) in 2 Specialized Psychiatry Hospitals, Psychiatry Department of a Medical university (Bangabandhu Sheikh Mujib Medical University) and an Army Hospital (Combined Military Hospital), Psychiatry Department of 8 Medical College Hospitals throughout the country from September 2017 to June 2018. Persons with severe mental illnesses 10 years and above in Inpatient Department (IPD) and Outpatient Department (OPD) of the study sites were included in the study.

Severe Mental Illnesses (SMI) included Major Depressive Disorder, Schizophrenia, Schizoaffective Disorder, Bipolar Disorders and Organic Psychotic Disorders diagnosed by research psychiatrists following Diagnostic and Statistical Manual 5 (DSM 5) criteria of diagnosis. Physical comorbidities were diagnosed by history, physical examination, relevant investigations and consultation with the consultant of the respective discipline. Pretested questionnaire for socio-demographic and clinical variables and DSM 5 for diagnosis of mental illnesses were used in the survey.

Local Coordinators (Psychiatrists), Research Psychiatrists, Research Officers, a Statistician, Medicine Specialists and other Specialists as required were recruited from

the study sites. Two coordination meetings with involvement of all were held. MS Access 2003 and SPSS version 18 were used for data entry and data analysis respectively.

Results

Among estimated 2200 samples from different sites of the study 1648 respondents provided complete information. Among them 93.57% were 18 years or older, 45.63% female and 54.36% male. Overall, 42.0 % of the respondents with severe mental illness (SMI) had physical comorbidity where diabetes mellitus (28.47%) was the most common comorbidity followed by hypertension (26.45%), Obesity (6.06%), Respiratory Tract Diseases (4.91%), Dyslipidemia (4.04%), Diseases of Thyroid Gland (3.46%), Diseases of Blood-mostly Anemia (3.32%), Urinary Tract Infection (2.89%), Diseases of Digestive System (2.60%), Diseases of the Musculoskeletal System (2.45%) and Ischemic Heart Disease (2.31%).

Other physical comorbidities included Infectious and Parasitic Disease (2.16%), Diseases of Skin (1.73%), Diseases of Genitourinary System (1.44%), Epilepsy (0.86%), Chronic Kidney Disease (0.86%) and Underweight (0.72%).

As additional findings, 7.77% of the respondents with severe mental illness had comorbid substance related and addictive disorders. Among the abusing substances cannabis (63.28%) was the most frequently used drug followed by amphetamine (18.75%), alcohol (14.06%) and other types of drugs (3.90%).

Conclusion

Physical comorbidities including using substances are common among patients with severe mental illness in Bangladesh which could result in adverse outcomes. Treatment of coexisting physical and mental disorders are required for proper management of patients with severe mental illnesses. Approach of integrative medicine involving different disciplines needs to be taken for managing such patients.

Introduction

When two disorders or illnesses occur in the same person, simultaneously or sequentially, they are described as co morbid. Mental illness is one of the major public health concerns all over the world where low-and middle-income countries encounter higher burden with minimum resources^{1,2}. This burden of mental illnesses can be increasingly threatening as persons with psychological illnesses face different sorts of hindrance while seeking health care for other diseases also. Two or more medical conditions existing simultaneously regardless of their causal relationship can be defined as comorbidity³. Overlapping of medical conditions with psychiatric conditions put a greater challenge to the healthcare system by creating additional costs⁴. Such challenges are even higher with severe types of mental illness which are more likely to be associated with physical conditions and substance use. According to National Institute of Mental Health, USA, 'Severe Mental Illness' can be defined as a mental, behavioral, or emotional disorder resulting in serious functional impairment, which substantially interferes with or limits one or more major life activities. "Severe mental illness" is a widely used expression that includes diagnosis, disability, and duration^{5,6}. Diagnosis of SMI encompasses major mental disorders, such as nonorganic psychosis, severe bipolar disorder, or personality disorders. Disability indicates physical or mental inability to meet age appropriate role requirements, such as functioning in school, work, relationships, and self-care.

Severe mental illness (SMI), including schizophrenia, bipolar disorder, schizoaffective disorder and major depressive disorder affects more than 4% of the adult population⁷. Studies also showed that persons with severe mental illness (SMI) have an excess mortality rate, being two or three times as high as that in the general population^{8,9} which has widened in recent decades^{10,11}, even in countries where the quality of the healthcare system is generally acknowledged to be good¹⁰. While these diseases are prevalent in the general population, the impact of individuals with SMI in the society is significantly greater¹². Persons with schizophrenia have mortality rates 2 to 2.5 times higher than the general population¹³. Patients suffering from bipolar mood disorders have high mortality rates ranging from 35% higher to twice higher than the general population^{14,15}. Those who are with depression have about 1.8 times higher mortality rates which is not limited to

severe cases or to suicide¹⁶. A study in India revealed that about 31% of psychiatric patients were living with coexisting physical illness and cardiovascular system (33.3%) was mostly involved in those cases followed by metabolic or endocrine diseases (27%)¹⁷. The recent “National Mental Health Survey of Bangladesh 2018-19” expressed that about 16.8% of Bangladeshis are suffering from different types of mental illnesses and among them 92.3% do not seek medical attention¹⁸. The prevalence rate of depressive disorders, schizophrenia spectrum disorders and bipolar and related disorders were 6.7%, 1.0% and 0.4% respectively¹⁸. In Bangladesh Mental illnesses are treated in tertiary care specialized Hospitals and also in general teaching hospitals¹⁹. The physical health of persons with severe mental illnesses are not only ignored by them but also by the health system¹³. The person with severe mental illness is usually neglected by the society in most of the time and this is likely to be more when he or she is burdened with additional comorbid disorders. Any management option is incomplete without addressing the comorbidity. Premature mortality and disability could be reduced if there were a greater focus on comorbidity. Little attention has been given to the issue of comorbidity among patients with SMI. Currently, some small scales research showed only the comorbid mental illnesses in chronic or non-communicable diseases. Bangladesh is an emerging country in all socioeconomic contexts. Health should not stay backward in this glorious journey. To develop effective and sustainable health care delivery model, mental and physical illnesses must be focused together with utmost priority. To achieve sustainable development goals (SDGs) aimed by the government good health and wellbeing of people should be ensured. So to provide effective, holistic and cost effective services to the person with severe mental illness it is necessary to determine the prevalence and types of physical co morbidity in persons with severe mental illness in Bangladesh.

Objective

The objective of the study was to estimate the prevalence and types of physical comorbidity among individuals diagnosed with severe mental illnesses. In addition, presence of substance related and addictive disorders among individuals with severe mental illnesses was also looked for.

Methods

National Institute of Mental Health (NIMH), Dhaka carried out the hospital based survey in collaboration with Non Communicable Disease Control (NCDC) wing of Directorate General of Health Services (DGHS) under Ministry of Health & Family Welfare (MOH&FW) of the Government of the People's Republic of Bangladesh during the period of September 2017 to June 2018. A hospital based cross-sectional study was conducted in inpatient and outpatient departments of 2 Specialized Psychiatry Hospitals (National Institute of Mental Health, Dhaka and Mental Hospital, Pabna), Psychiatry Department of a Medical University and an Army Hospital (Bangabhandhu Sheikh Mujib Medical University and Combined Military Hospital, Dhaka), Psychiatry Departments of 8 Medical Colleges (Dhaka Medical College, Sir Salimullah Medical College, Sylhet MAG Osmani Medical College, Shahid Ziaur Rahman Medical College, Bagura, Shre-e-Bangla Medical College, Barishal, Khulna Medical College, Chittagong Medical College and Rangpur Medical College throughout the country from September 2017 to June 2018.

This hospital based study was cross sectional in nature and was conducted in both Dhaka and outside of Dhaka in Bangladesh. During the study period, persons with severe mental illnesses 10 years and above in Inpatient Department (IPD) and Outpatient Department (OPD) of the study sites were included in the study. Severe mental illnesses included Major Depressive Disorder, Schizophrenia, Schizoaffective Disorder, Bipolar Disorders and Organic Psychotic Disorders diagnosed by research psychiatrist from the respective site of the survey. Patients or attendants of the patients refusing to participate in the study were excluded from the study.

Sample size estimation

As there was no previous representative study in Bangladesh we considered the prevalence of physical comorbidities in the neighboring country India where 31% of psychiatric patients had physical illnesses.¹⁷ Assuming this figure applicable to this study we applied it along with other statistics given below into the following formula. We calculated the sample size for the study as follows.

$$n = \frac{z^2 p(1-p)}{d^2} = 2052$$

where

$z = 1.96$ (Standard normal variant value for 95% confidence)

$p = 0.31$ (Expected prevalence or proportion of the disorder)

$1-p = 0.69$

$d = .02$

The sample size calculation indicated 2052 sample should be adequate. However, considering the chance of missing data we considered to approach 2200 patients visiting the institutions.

Special investigations were supposed to be required to do in 50% of sample cases as the possibility of physical co-morbidity might be around 50% revealed in different studies.

Research instruments used in the study

- I. Questionnaire for socio-demographic and clinical variables.
- II. Diagnostic and Statistical Manual of Mental Disorders, 5th Edition (DSM 5) Criteria for diagnosis the severe mental illnesses.²⁰
- III. BMI chart, height and weight machine, BP measurement instrument, Peak flow meter etc.

Questionnaire for socio-demographic and clinical variables: A customized questionnaire including gender, age, educational level, monthly family income, employment status, types of family, and number of family members was used to collect data. Questions for clinical variables included questions on patients currently getting treatment or not, treatment was regular or not, fits were controlled or not; so that treatment data were recorded also.

Diagnostic and Statistical Manual of Mental Disorders, 5th Edition (DSM-5)²⁰: DSM-5 criteria for diagnosis was used to diagnose people with severe mental illnesses. For diagnosis of mental disorders DSM-5 was used because it serves as the principal authority for psychiatric diagnoses all over the world.

BMI chart, height, weight, BP measurement, Peak flow meter: Body height was measured in centimeters using a calibrated non-stretchable tape positioned on a wall with the participant standing with their back against the wall. Body weight was measured in kilograms using a calibrated analogue weight machine. All measurements were carried out by appropriately trained clinical staffs. BMI was calculated according to the formula, $BMI = \text{weight (kg)} / \text{height squared (m}^2\text{)}$. Blood pressure was measured using sphygmomanometer and peak flow meter was used to measure the air flow in lungs. Before starting the data collection, a pre testing of questionnaires was done in two 2 sites outside the study area and after that the final questionnaires were developed.

Recruitment, coordination meetings and pre-testing

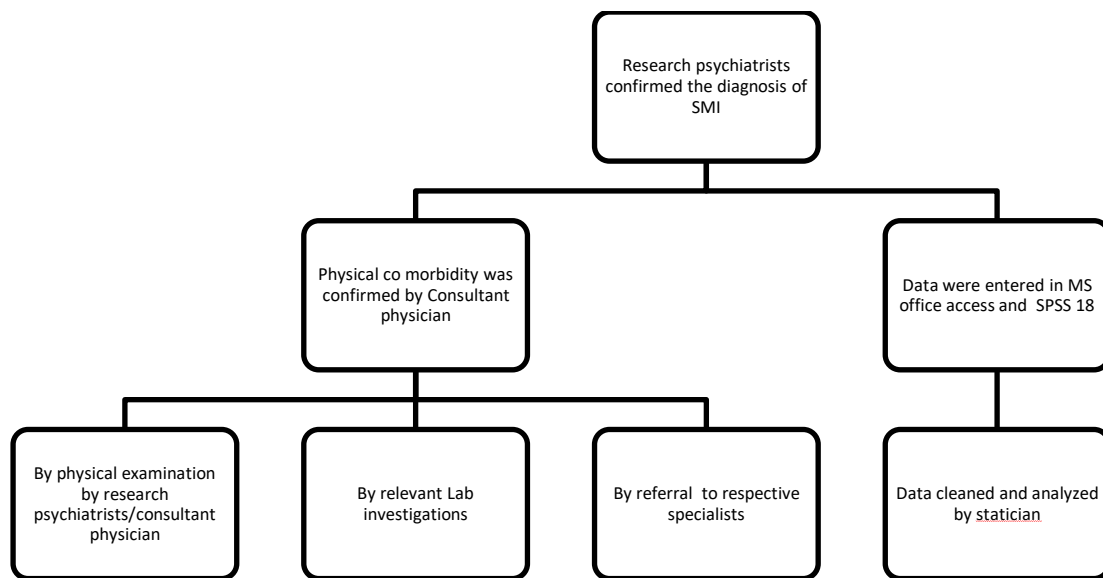
Local Coordinators (Psychiatrists), Research Psychiatrists, Research Officers, Medicine Specialists and other Specialists as required were recruited from the study sites. A Statistician was also recruited for the study. Two coordination meetings were organized at NIMH involving all research personnel from the study sites. Before starting data collection pre testing of questionnaires was done in two 2 study sites, one in Dhaka and another outside of Dhaka. Samples for pretesting were not samples of the original study. After recommended modification final questionnaires were developed.

Data collection techniques and procedure in the field

During the study period consecutive persons with severe mental illnesses were diagnosed and recruited. In the first stage, diagnoses of severe mental illnesses were done following DSM 5 criteria²⁰ of diagnosis by respective Research Psychiatrist in consultation with Local Coordinator who was also a senior psychiatrist. Before confirmation of diagnosis informed written consent of the samples or their guardians were taken. Then the Research officers collected socio-demographic and related clinical data

of the diagnosed cases. In the second stage, thorough physical examination of the patients was done by Research Psychiatrists to look for possible co-morbid physical illnesses. Routine physical investigations were also done for all patients. Special investigations were conducted for diagnoses of co-morbid disorders. Finally, cases were referred to respective medical consultant for confirmation of diagnosis of physical illnesses as required. Local coordinators in all the sites of the study supervised the activities in their respective area.

Stepwise approach to respondents



Data processing and statistical analysis

Data were checked for consistencies as well as for completeness. Data collected from each respondent was checked to ensure the completeness of its contents. Data were entered and encoded into the data entry program MS Access 2003. Then data were transferred to computer program SPSS version 18 to analyze and summarize data. Statistical analysis were done by the Statistician employed for the purpose using frequencies and percentages and by applying other statistical tests as required. Computer, secretarial and administrative facilities were available at National Institute of Mental Health, Dhaka.

Ethical consideration

Ethical clearance was taken from Bangladesh Medical Research Council (BMRC). Permission also was taken from the authorities /departments of respective institutes or medical colleges. Research objectives and procedure of the study were explained to every study individual and their guardians before start of interview. Informed written consent from patient or guardian as required was obtained before interview. Bengali version of ascent and consent forms was read out and then signed by child respondent in the ascent form and their parents or guardians of the adult patients in the consent form. All respondents had the liberty to leave the study at any stage. They were also free to refuse to answer any question. Confidentiality was maintained at every stage of data collection for every individual. Each questionnaire was identified by a code number. The final report did not contain the names of the respondents.

Every endeavor was made to limit harmful effect of the study either on the family or on the individual. Illiterate respondent or guardian was asked to put their thumb impression. Interviews were conducted at times and locations suitable to the study individuals and privacy was maintained during assessment.

Results

Among estimated 2200 samples aged 10 years or above were approached for data collection from different sites of the study. Among them 1648 respondents provided complete information. Others either did not meet the selection criteria or did not respond. Nonresponse was mainly due to refusal of the respondents to give interview and absence of the respondents during full interview and assessment.

Majority of the respondents were 18 years and above (93.57%), male (54.36%) respondents were more than female (45.63%) and respondents from nuclear family (65.84%) exceeded respondents from extended family (34.16%) (Table1).

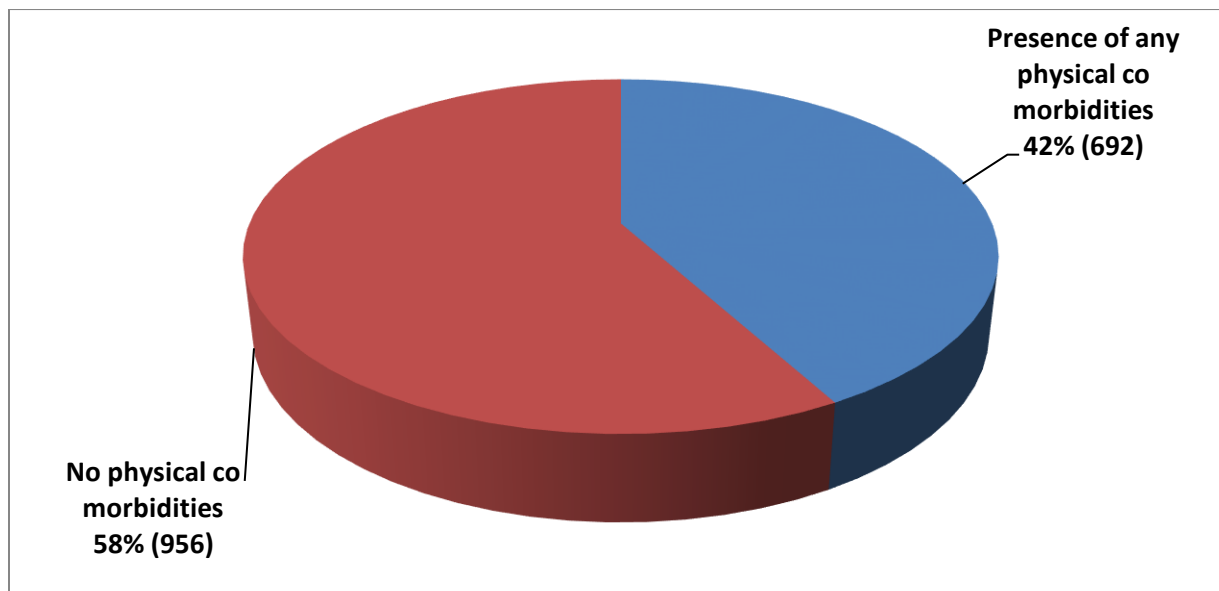
Table 1. Socio-demographic and clinical characteristics of respondents with SMI (n=1648)

Characteristics		Frequencies	Percent (%)
Age	<18 years	106	6.43
	>18 years	1542	93.57
Sex	Female	752	45.63
	Male	896	54.36
Family types	Extended	563	34.16
	Nuclear	1085	65.84
Education	Illiterate	202	12.25
	Sign own name	125	7.58
	Primary	458	27.80
	Secondary	452	27.43
	Higher Secondary	191	11.58
	Graduates	128	7.76
	Masters	81	4.92
	Others	11	0.66
Premorbid Occupation	Unemployed	154	9.34
	Business	96	5.82
	Farmer	98	5.94
	Service	259	15.71

	Housewife	436	26.45
	Domestic worker	28	1.70
	Day labor	157	9.52
	Student	327	19.85
	Others	87	5.28
Marital Status	Married	890	54.00
	Unmarried	582	35.31
	Living separated	56	3.40
	Divorced	91	61.48
	Others	29	1.76
	(Death of spouse)		
Known physical illness	Yes	485	29.42
	No	1163	70.57
Family history of chronic physical illness	Yes	491	29.80
	No	1157	70.20

Among patients with SMI, around three-fifth of them (956, 58%) had no physical co-morbidities and rest (692, 42%) of the patients had some extent of physical comorbidities (Figure1).

Figure 1. Physical co morbidities among persons with major mental disorders (n=1648)



Respondents from the age group 41 to 48 years (8.98%) had the highest proportion of physical comorbidity followed by age group 49 to 56 years (8.0%). Respondents from the age group 18 years or less (1.57%) reported the lowest proportion of physical comorbidity (Table 2).

Table 2. Distribution of respondents with physical comorbidities depending on age group (n= 692)

Age (year)	Frequency of respondents n (%)	Proportion of respondents with any physical comorbidity n (%)
<18	106 (6.43)	26 (1.57)
18-25	274 (16.63)	54 (3.28)
26-32	366 (22.20)	104 (6.31)
33-40	321 (19.48)	129 (7.82)
41-48	249 (15.10)	148 (8.98)
49-56	184 (11.16)	132 (8.00)
57-64	92 (5.58)	58 (3.51)
≥65	56 (3.34)	41 (2.49)

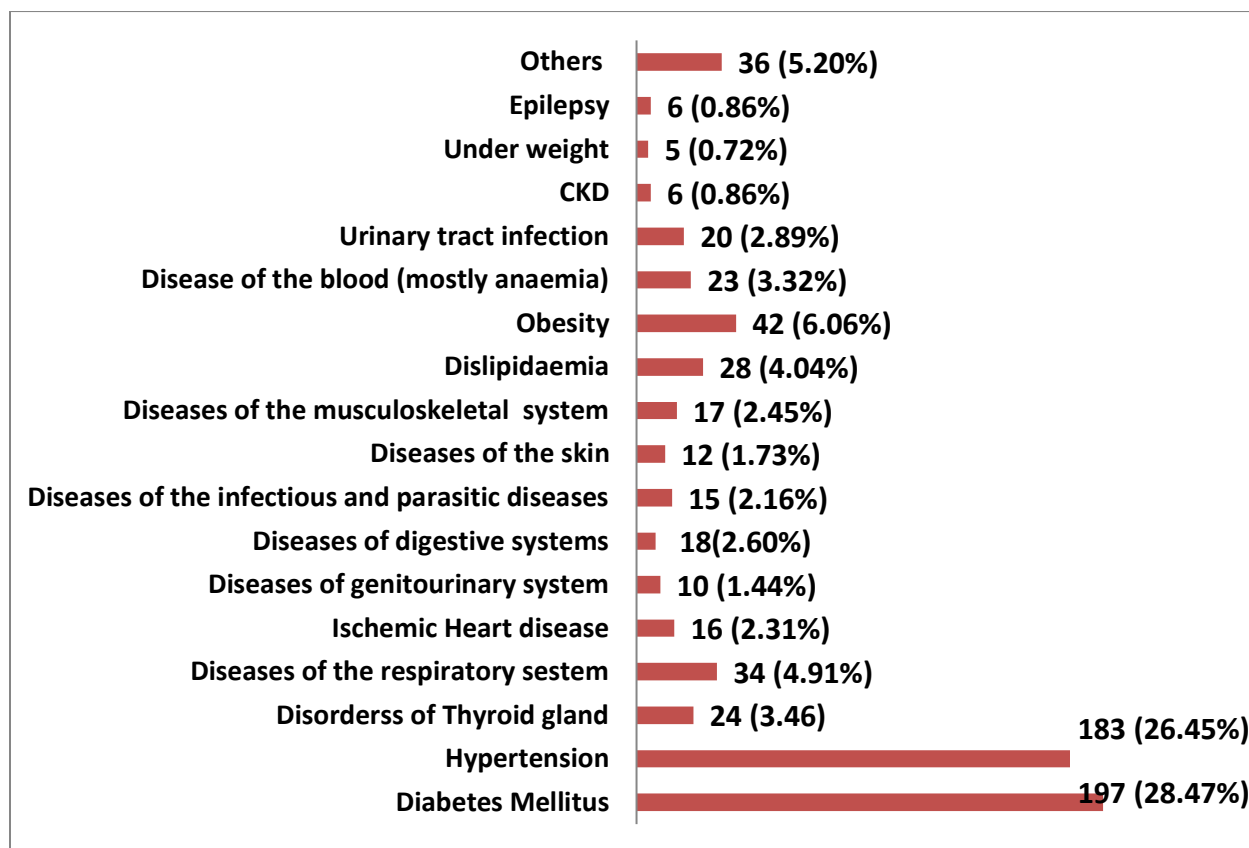
Statistically significant association was found between age and physical co-morbidities ($p < 0.01$) where older psychiatric patients with SMI tended to having more physical co morbidities that the younger patients (age category redefined as <41 years and >48 years (Table 3).

Table 3. Distribution of total respondents depending on age groups and physical comorbidities (n=1648)

Age (year)	Frequencies of respondents n (%)	Physical comorbidities in corresponding age group (%)
<18	106 (6.43)	24.52
18-25	274 (16.63)	19.70
26-32	366 (22.20)	28.41
33-40	321 (19.48)	40.18
41-48	249 (15.10)	59.43
49-56	184 (11.16)	71.74
57-64	92 (5.58)	63.01
≥65	56 (3.34)	73.21

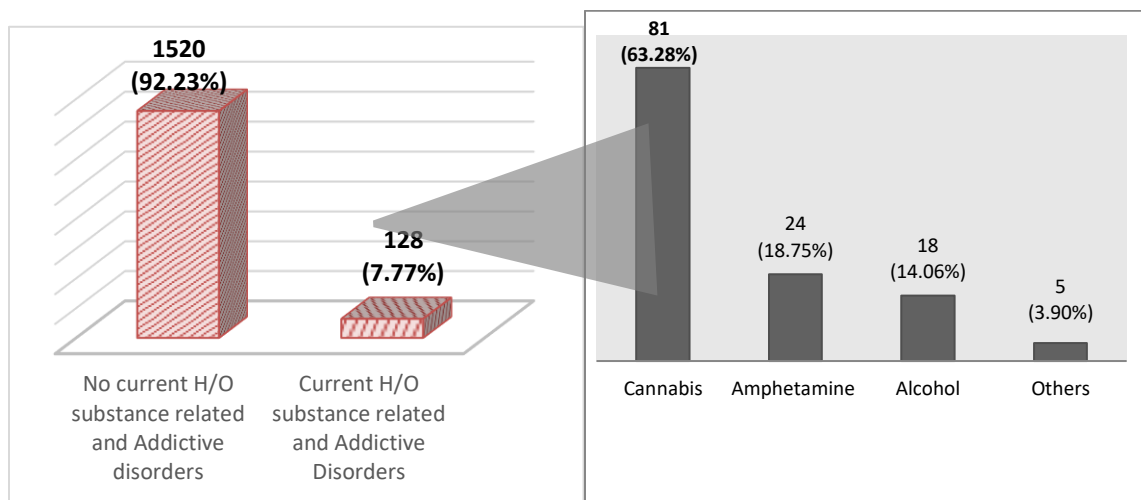
Figure 2 shows that, among the patients of SMI with physical co-morbidities (n=692), more than 50% were suffering from Diabetes Mellitus (197, 28.47%) and Hypertension (183, 26.45%). There were 42 (6.06%) obese patients and very small number of patients (0.72%) was underweight.

Figure 2: Types and proportion of physical co morbidities among patients with severe mental illness (n=692)



Overall, 7.77% patients with SMI had substance related and addictive disorders. Of them, more than three-fifth (63.28%) had history of cannabis intake followed by amphetamine (18.75%) and alcohol (14.06%) (Figure 3).

Figure 3: Presence of substance related and addictive disorders among persons with severe mental illness (n=128)



Discussion

Mind and body are inseparable and both are important components of health. This bidirectional relationship leads to great deal of overlap between physical and mental disorders. Psychiatric patients with comorbid physical disorders are usually chronically ill and inadequately responding to treatments who are often referred to as high-cost-utilizers, inadequate responders, and treatment refractory. It has been also seen that longevity of patients with mental disorders is usually less^{8,9} which is mainly due to comorbid physical disorders not due to mental disorder itself. Psychiatrists tend to diagnose only mental illness and give very little attention to comorbid physical illness of patients with mental illness. It was observed that physical examination was performed less frequently in psychiatric inpatients and outpatients. Existence of comorbid substance use among psychiatric patients is not also uncommon. Reduced healthy life expectancy, due to the high burden of both mental and physical illnesses, is a major public health concern all over the world²¹.

The present study was conducted to explore the prevalence and types of physical comorbidity including substance use in person with severe mental illnesses in Bangladesh. A total of 1648 participants with SMI from different institutions of all over the country completed total interview and assessment. Overall, 42% of all respondents with severe mental illness in this study had some extent of physical comorbidities. Comorbidities found in patients with severe mental illness are not much different from other studies in this regard. Many physical illnesses occur with greater frequency in patients with SMI. Diabetes mellitus (DM) and hypertension were the highest prevalent physical comorbidities comprising of 28.47% and 26.45% respectively. Consistent with the findings of the previous researches, the present study supports that people with diabetes and hypertension are more likely to suffer from severe mental disorders.^{22,23,24,25} Similarly, cross-sectional studies looking at the prevalence of physical health conditions in mental health population have reported higher prevalence rates of such types of illnesses (67-68%)^{26,27,28}. Various other studies have also drawn attention to the comorbidity of chronic physical diseases and mental disorders.²⁹

Over the past two decades the prevalence of comorbid mental and physical disorders has increased dramatically, reaching epidemic problems in many countries.⁴ Numerous studies worldwide have reported disproportionate medical comorbidities and premature death among people with serious mental illness.³⁰ The lifetime prevalence of any physical disorder among patients with SMI has been reported to be 46.4%, while the life time prevalence of 2 and 3 physical disorders were found to be 27.7% and 17.3%, respectively.³¹ In a study in India it was reported that 31% of the patients in outpatient department of psychiatry hospital were having coexisting physical illness and the main system involved was cardiovascular (33.3%) in which hypertension was the most common diagnosis followed by endocrine (27%), in which diabetes mellitus and hypothyroidism were the most common diagnoses.¹⁷ Common physical diseases among patients with severe mental illness reported in this survey were diabetes mellitus, hypertension, obesity and diseases of respiratory tract. About 28.47% of patients were suffering from diabetes mellitus. The prevalence of DM was also found 2 to 3 times higher among patients with schizophrenia, bipolar disorder and schizoaffective disorder than the

general population^{32,33} and it was 1.2 to 2.6 times higher in people with depression.³⁴ Increased risk of DM in patients with SMI may be explained by multiple factors including genetics, life style and treatment factors. Atypical antipsychotics, diet and physical inactivity are among the important issues related to DM in these patients.

Hypertension is a form of major cardiovascular diseases (CVD) and it was found among 26.45% of patients with SMI in the current study. Evidence supports that patients with bipolar disorder (BD), schizophrenia and major depressive disorder are at significantly higher risk of cardiovascular morbidity and mortality than that of general population.^{35,36} It was also seen that CVD was the commonest cause of death in patients with SMI.^{35,37} The etiology of the excess CVD may be multifactorial and it may include genetic, lifestyle and treatment factors.³⁸ This group of patients are likely to be obese also and the prevalence of obesity among SMI patients was 6.05% in this survey. Obesity and SMI overlap at a clinically significant level.³⁹ Study findings suggest that people with SMI are at increased risk of overweight than people in general even in early phase of illness.^{40,41} Obesity is a part of metabolic syndrome and rate of metabolic syndrome in patients with bipolar disorder and schizoaffective disorder have been found to be 22-30%⁴² and 42% respectively.⁴³

For several decades, respiratory tract diseases such as pneumonia and tuberculosis accounted for majority of deaths in people with SMI who lived in institutions.³⁵ Respiratory diseases are still more prevalent among people with SMI.⁹ About 4.91% of the respondents in this survey had diseases of the respiratory system. Coexistence of respiratory tract, urinary tract and parasitic infections found associated in this survey may be due to poor self care of the patients with SMI.

There were many other physical comorbidities among patients with SMI in this study and they were dyslipidemia, diseases of thyroid gland, diseases of blood-mostly anemia, ischemic heart disease, diseases of genitourinary system, diseases of digestive system, infectious and parasitic disease, diseases of skin, diseases of the musculoskeletal

system, urinary tract infection), chronic kidney disease, underweight, epilepsy and some other diseases.

Studies found strong relationships between comorbidity and higher rates of suicide^{44,45}, suicidal ideation⁴⁶, greater symptom severity^{47,48}, and poorer quality of life and social support.⁴⁶ Patients diagnosed with multiple disorders also tend to have a poorer prognosis, are less responsive to intervention, and generally exert a greater demand on the health care sector.^{44,45,48} Several studies have attributed medical comorbidities among psychiatric patients as responsible for the premature death observed in this population^{49,50}. Although these health disparities have been well studied and addressed in the western world, gaps in information on this issue still exist in the developing world, particularly in Bangladesh.

As additional findings, 7.77% patients with SMI had substance related and addictive disorders. Of them, more than three-fifth (63.28%) had history of cannabis intake followed by amphetamine (18.75%) and alcohol (14.06%). A study on substance use in Bangladesh in 2018 conducted by National Institute of Mental Health, Dhaka revealed that 3.30% of adult population of the country were using substances and cannabis (42.70%) was the commonest abusing substance followed by alcohol (27.50%), inhalant (20.4%), amphetamine (15.20%) and opioid (5.40%).⁵¹ Patients with SMI usually lack insight and many of them are likely to have premorbid personality disorders both of which make them vulnerable to mental illness. Substance use among patients with SMI may be primary or secondary in nature. Differentiating diagnosis of mental illness and substance use is important for both management and follow up. Thorough physical examination and investigations are essential part of management of substance use which may be selective in case of mental illness.

Among the study population, 93.57% were 18 years or older, 45.63% were female, 54.36% were male, 27.8% studied up to class five, and 68.54% population came from nuclear family. Respondents from the age group 41 to 48 years (8.98%) had the highest proportion of physical comorbidity followed by age group 49 to 56 years (8.0%). Statistically significant association was found between age and physical co-morbidities ($p < 0.01$) where older psychiatric patients with SMI had more physical co morbidities that

the younger patients. Respondents from the age group 18 years or less (1.57%) reported the lowest proportion of physical comorbidity. Physical diseases like diabetes, hypertension, dyslipidemia, ischemic heart disease and chronic kidney disease are usually the diseases of older age group and coexistence of these physical diseases with older patients having severe mental illness creates additional burden for management and ultimately leads to poorer prognosis. Male female difference in this study may be explained by the dominance of males in getting mental health services on priority especially in hospital set up in Bangladesh. Females may have been ignored of the services that is usually provided to males. No significant association was found between physical co-morbidity and severe mental illness in terms of sex, family type, education, occupation and marital status. Basically, the co-occurrence of physical and mental disorder depends on several different factors including geographical region, sex, race, social class and many more factors. Although the present study did not find any significant difference between physical and mental disease co-occurrence in terms of sex but other studies showed sex differences in terms of physical and mental co-morbidity.^{52,53} The discrepant result with previous studies suggests the need for more researches using more specific measures of mental illness to fully understand sex and co morbidity.

The results of different studies around the globe suggest that patients of SMI may develop several physical disorders which could result in adverse outcomes.^{54,55,56} The findings of this study also support that people with severe mental illness may develop several chronic physical problems which could result in adverse outcomes^{57,58,659}, that could vary based on various factors such as their history of substance use and other socio demographic status. Managing physical disorders in patients with SMI and substance use disorder would entail shared responsibility among psychiatrists, substance use specialists, primary care physicians, and other health professionals.⁶⁰ Clinicians managing severe mental disorders should screen for physical disorders and provide treatment or go for referral. Such integrated care can enhance a patient's overall wellbeing and can prevent any additional problem. Premature death and disability can also be reduced with greater focus on comorbidity²¹. Attention to these physical disorders at the individual level and health care system level will improve outcomes of this group of population. Side effects of psychotropic medications, modifiable life style factors, prevention of substance abuse

and access to appropriate health care remain addressable for patients with SMI. Efforts are required to convince decision makers, educators, clinicians, and community workers that comorbidity is one of the most urgent challenges to the quality of health care in the twenty first century that must be recognized and dealt with without delay.

Though it was a first large scale study to find the prevalence of comorbid physical problems among the patients with severe mental illness we must acknowledge few limitations of the study. The cross sectional study conducted in hospital settings prevents claiming it as the overall prevalence of comorbidity among patients with SMI in the whole community of Bangladesh. Diagnosis of SMI was done by research psychiatrists following DSM 5 criteria of diagnosis. The subjective variation in diagnosis and physical examination need to be considered also.

Implication of the study

Thus it is important that psychiatrist should not miss the coexisting physical illness in the patient that may present with mental disorder. In the same way, physician needs to be cautious that some physical illness may be the reflection of underlying mental illness. The occurrence of mental physical comorbidity has public health significance specially in Bangladesh. The national health strategy focuses on mental health and intends to develop programs to improve the delivery of mental health services that revolve around community-based care in Bangladesh. Exploring the prevalence of medical comorbidities in people with severe mental illness and how these are being addressed are necessary to build strategies within the primary health care system to close the care gaps. Result of the survey is intended to be a guide for all healthcare professionals to working with the group of patients suffering from severe mental illness having multiple comorbid disorders. Holistic evaluation looking at the whole patient is required for proper management Integrated treatment plans that focus on all the treatment needs of the patient may be developed based on the survey result.

Conclusion

The study findings suggest that physical comorbidity among patients with SMI is one of the most urgent challenges to the quality of mental health care in the twenty first century that must be recognized and dealt with without delay. The health system and mental health policy makers should consider the physical comorbidities of the patient suffering from mental health problems and their should be adequate facilities to address this issue in every mental health setting. We need to consider an integrated care program for each patient at every government healthcare facility. Recommendations based on the study findings are i. psychiatrists should not miss the physical co morbidities in the patients that may present with a mental illness and medical professionals dealing with physical illness should also be vigilant that physical problems may be reflection of mental illness or there may be coexistent mental illness, ii. physical and psychiatric assessment of persons with substance use must be given due importance, iii. appropriate management of comorbidity at the individual and public health level will require a significant reorientation of medical students, medical professionals and reorganization of health services, iv. health services will have to be adjusted to the fact that most of the people who come to seek help are likely to suffer from more than one illness, v. researchers will have to give more attention to the commonalities in the pathogenesis of mental and physical disorders and to the development and assessment of strategies for the treatment of co morbid conditions and vi. Psychiatry hospital needs to have other departments specially medicine and its allied subjects with laboratory facilities.

Recommendations

- Psychiatrists should not miss the physical co morbidities in the patients that may present with a mental disorders and physicians dealing with physical illness should also be vigilant that physical problems may be reflection of mental illness or there may be coexistent mental illness like Schizophrenia.
- Appropriate management of comorbidity at the individual and public health level will require a significant reorientation of medical students, medical professionals and reorganization of health services.
- Health services will have to be adjusted to the fact that most of the people who come to seek help are likely to suffer from more than one illness.
- Researchers will have to give more attention to the commonalities in the pathogenesis of mental and physical disorders and to the development and assessment of strategies for the treatment of co morbid conditions.
- A psychiatry hospital needs to have other departments specially pediatrics, medicine and its allied subjects with laboratory facilities.

References

1. Bass JK, Bornemann TH, Burkey M, Chehil S, Chen L, Copeland JRM, Eaton WW, Ganju V, Hayward E, Hock RS, Kidwai R, Kolappa K, Lee PT, Minas H, Or F, Raviola GJ, Saraceno B, Patel V. A United Nations General Assembly Special Session for Mental, Neurological, and Substance Use Disorders: The Time Has Come. *PLoS Med.* 2012;9(1):e1001159. doi: 10.1371/journal.pmed.1001159.
2. Hock RS, Or F, Kolappa K, Burkey MD, Surkan PJ, Eaton WW. A new resolution for global mental health. *Lancet.* 2012;379(9824):1367–1368. doi: 10.1016/S0140-6736(12)60243-8.
3. Jakovljević M, Ostojić L "Comorbidity and multimorbidity in medicine today: challenges and opportunities for bringing separated branches of medicine closer to each other". *Psychiatr Danub.* (June 2013); 2 .5 Suppl 1 (25 Suppl 1): 18–28. [PMID 23806971](#)
4. Sartorius N. Comorbidity of mental and physical diseases: a main challenge for medicine of the 21st century. *Shanghai Arch Psychiatry.* 2013; 25(2):68-69. doi:10.3969/j.issn.1002-0829.2013.02.002
5. Ruggeri M, Leese M, Thornicroft G et al. Definition and prevalence of severe and persistent mental illness. *Br J Psychiatry* 2000; 176:149-55.
6. Schinnar A, Rothbard A, Kanter R et al. An empirical literature review of definitions of severe and persistent mental illness. *Am J Psychiatry* 1990;147:1602-8.
7. WHO. Helping people with severe mental disorders live longer and healthier lives. 2017, Source: [https://apps.who.int/iris/bitstream/handle/10665/259575/WHO-MSD-MER-17.7-eng.pdf;jsessionid=47109122BB10D65471AC4A32FE318DA8?sequence=1\(8\)](https://apps.who.int/iris/bitstream/handle/10665/259575/WHO-MSD-MER-17.7-eng.pdf;jsessionid=47109122BB10D65471AC4A32FE318DA8?sequence=1(8))
8. Harris EC, Barraclough B. Excess mortality of mental disorder. *Br J Psychiatry* 1998;173:11-53.
9. Laursen TM, Munk-Olsen T, Nordentoft M et al. Increased mortality among patients admitted with major psychiatric disorders: a register-based study comparing mortality in unipolar depressive disorder, bipolar affective disorder, schizoaffective disorder, and schizophrenia. *J Clin Psychiatry* 2007;68:899-907.
10. Osby U, Correia N, Brandt L et al. Time trends in schizophrenia mortality in Stockholm county, Sweden: cohort study. *BMJ* 2000; 321:483-4.
11. Robson D, Gray R. Serious mental illness and physical health problems: a discussion paper. *Int J Nurs Stud* 2007;44:457-66.

12. Maj M. *Physical health care in persons with severe mental illness: a public health and ethical priority.* *World Psychiatry* 2009;8:1-2.
13. WHO. *Excess mortality in persons with severe mental disorders.* 2016; Source: https://www.who.int/mental_health/evidence/excess_mortality_report/en/
14. Chesney E, Goodwin, GM, Fazel S. *Risks of all-cause and suicide mortality in mental disorders: A meta-review.* *World Psychiatry*, 2014;13, 153-160.
15. Hayes JF, Miles J, Walters K, King M, Osborn, DPJ. *A systematic review and meta-analysis of premature mortality in bipolar affective disorder.* *Acta Psychiatrica Scandinavica*, 2015;131, 417-425.
16. Cuijpers P, Schoevers RA. *Increased mortality in depressive disorders: A review.* *Current Psychiatry Reports*, 2004; 6, 430-437.
17. Vaidyanathan, A, Monteiro J, Avinash B, Bondade, S, Sattar FA, Kumar, KK. *(Physical comorbidities in patients visiting the psychiatric outpatient department in a tertiary hospital in India.* *Asian J Psychiatry*, 2017; 25, 136–137. doi:10.1016/j.ajp.2016.10.004
18. *National Mental Health Survey, Bangladesh 2018-19, April 2019;* Source: https://www.who.int/docs/default-source/searo/bangladesh/pdf-reports/cat-2/nimh-fact-sheet-5-11-19.pdf?sfvrsn=3e62d4b0_2.
19. Islam, Anwar. *(Mental Health and the Health System in Bangladesh: Situation Analysis of a Neglected Domain.* *Am J Psychiat Neuroscence*, 2015); 3. 57. 10.11648/j.ajpn.20150304.11.
20. *American Psychiatric Association. Diagnostic and Statistical Manual 5 (DSM 5) for diagnosis of mental disorders.* American Psychiatric Publishing, Arlington, V, American Psychiatric Association, 2013.
21. *World Health Organization. Addressing comorbidity between mental disorders and major non-communicable diseases.* 2015; Source: http://www.euro.who.int/__data/assets/pdf_file/0009/342297/Comorbidity-report_E-web.pdf [last accessed: 16-05-2020]
22. Boden MT. *Prevalence of mental disorders and related functioning and treatment engagement among people with diabetes.* *J Psychosomat Research*, 2018; 106, 62-69. doi: 10.1016/j.jpsychores.2018.01.001
23. Das-Munshi J, Stewart R, Ismail K, Bebbington PE, Jenkins R, Prince M J. *Diabetes, common mental disorders, and disability: findings from the UK National Psychiatric Morbidity Survey.* *Psychosomatic medicine*, 2007; 69(6), 543-550. doi: 10.1097/PSY.0b013e3180cc3062

24. Keskin A, Bilge U. *Mental disorders frequency alternative and complementary medicine usage among patients with hypertension and type 2 diabetes mellitus. Nigerian J Clin Practice. 2014; 17(6), 717-722. doi: 10.4103/1119-3077.144384*
25. Stein DJ, Aguilar-Gaxiola, S, Alonso J, Bruffaerts R, De Jonge P, Liu Z, Angermeyer MC. *Associations between mental disorders and subsequent onset of hypertension. Gene Hospi Psychiatry, 2014; 36(2), 142-149. doi: 10.1016/j.genhosppsy.2013.11.002*
26. Levinson D, Karger, CJ, & Haklai Z. *Chronic physical conditions and use of health services among persons with mental disorders—results from the Israel National Health Survey. Gen Hospi Psychiatry, (2008); 30(3), 226-232. doi: 10.1016/j.genhosppsy.2008.02.007*
27. Scott KM, Von Korff, M, Alonso J, Angermeyer MC, Bromet E, Fayyad, J, Haro, JM. *Mental–physical co-morbidity and its relationship with disability: results from the World Mental Health Surveys. Psychological Medicine, 2009; 39(1), 33-43. doi:10.1017/S0033291708003188*
28. Sherbourne CD, Wells KB, Meredith, LS, Jackson, CA, Camp P. *Comorbid anxiety disorder and the functioning and well-being of chronically ill patients of general medical providers. Archives of General Psychiatry, 1996; 53(10), 889-895.*
29. Toft T, Fink PER, Oernboel EVA, Christensen, KAJ, Frosthalm L, Olesen F. *Mental disorders in primary care: prevalence and co-morbidity among disorders. Results from the functional illness in primary care (FIP) study. Psycholo Medicine, 2005; 35(8), 1175-1184. doi: 10.1017/S0033291705004459*
30. Zolezzi M, Abdulrhim S, Isleem N, Zahrah F, Eltorki Y. *Medical comorbidities in patients with serious mental illness: a retrospective study of mental health patients attending an outpatient clinic in Qatar, Neuropsychiatric Disease and Treatment, 2017; Vol: 13 pp: 2411–2418.*
31. Kessler RC, Berglund Patricia, Demler Olga, Robert J et al. *Lifetime prevalence and age-of-onset distributions of DSM-IV disorders in the National Comorbidity Survey Replication. Arch Gen Psychiatry. 2005; 6;62(6):593–602. [CrossRef] [Medline: 15939837] [PubMed]*
32. Leucht S, Corves C, Arbter D et al. *Second generation versus first generation antipsychotic drugs for schizophrenia: a meta analysis. Lancet, 2009; 373:31-41.*
33. Holt RI, Peveler RC. *Association between antipsychotic drugs and diabetes. Diabetes Obes Metab, 2006;8:125-35.*
34. Arroyo C, Hu FB, Ryan LM et al. *Depressive symptoms and risk of type 2 diabetes in women. Diabetes Care, 2004; 27:123-33.*
35. Brown S. *Excess mortality of schizophrenia. A meta-analysis. Br J Psychiatry, 1997; 171:502-8.*

36. Brown S, Inskip H, Barraclogh B. Causes of the excess mortality of schizophrenia. *Br J Psychiatry*, 2000; 177:212-7.
37. Hennekens CH, Hennekens AR, Hollar D et al. Schizophrenia and increased risks of cardiovascular disease. *Am Heart J* 2005;150:1115-21
38. De Hert MD, Ekker JM, Wood D et al. cardiovascular disease and diabetes in people with severe mental illness. Position statement from the European Psychiatric Association (EPA), supported by the European Association for the Study of Diabetes (EASD) and the European Society of Cardiology (ESC). *Eur Psychiatry* 2009;24:412-24.
39. McElroy SL. Obesity in patients with severe mental illness: overview and management. *J Clin Psychiatry*, 2009;70:12-21.
40. Ryan MC, Flanagan S, Kinsella U et al. The effects of atypical antipsychotics on visceral fat distribution in first episode, drug-naive patients with schizophrenia. *Life Sci* 2004;74:1999-2008.
41. Maina G, Salvi V, Vitalucci A et al. Prevalence and correlates of overweight in drug-naive patients with bipolar disorder. *J Affect Disord* 2008;110:149-55.
42. Fagiolini A, Frank E, Scott JA et al. Metabolic syndrome in bipolar disorder: findings from the bipolar disorder center for Pennsylvanians. *Bipolar Disord* 2005;7:424-30.
43. Basu R, Brar JS, Chengappa KN et al. The prevalence of the metabolic syndrome in patients with schizoaffective disorder-bipolar subtype. *Bipolar Disord* 2004;6:314-8.
44. Albert Umberto, Rosso Gianluca, Maina Giuseppe, Bogetto Filippo, authors. Impact of anxiety disorder comorbidity on quality of life in euthymic bipolar disorder patients: differences between bipolar I and II subtypes. *J Affect Disord*. 2008 1;105(1-3):297–303. [[CrossRef](#)] [[Medline: 17617468](#)] [[PubMed](#)]
45. Schoevers Robert A, Deeg D J H, van Tilburg W, Beekman A T F, authors. Depression and generalized anxiety disorder: co-occurrence and longitudinal patterns in elderly patients. *Am J Geriatr Psychiatry*. 2005 1;13(1):31–9. [[CrossRef](#)] [[Medline: 15653938](#)] [[PubMed](#)]
46. Al-Asadi Ali M, Klein Britt, Meyer Denny, authors. Comorbidity structure of psychological disorders in the online e-PASS data as predictors of psychosocial adjustment measures: psychological distress, adequate social support, self-confidence, quality of life, and suicidal ideation. *J Med Internet Res*. 2014;16(10):e248 . [[CrossRef](#)] [[Medline: 25351885](#)] [[PubMed](#)]
47. Kessler Ronald C, Chiu Wai Tat, Demler Olga, Merikangas Kathleen R, Walters Ellen E, authors. Prevalence, severity, and comorbidity of 12-month DSM-IV disorders in the National Comorbidity Survey Replication. *Arch Gen Psychiatry*. 2005 6;62(6):617–27. [[CrossRef](#)] [[Medline: 15939839](#)] [[PubMed](#)]

48. Farabaugh Amy, Fava Maurizio, Mischoulon David, Sklarsky Katie, Petersen Timothy, Alpert Jonathan, authors. Relationships between major depressive disorder and comorbid anxiety and personality disorders. *Compr Psychiatry*. 2005;46(4):266–71. [Medline: 16175757] [PubMed]
49. Colton CW, Manderscheid RW. Congruencies in increased mortality rates, years of potential life lost, and causes of death among public mental health clients in eight states. *Prev Chronic Dis*. 2006;3(2):A42.
50. Lawrence D, Hancock KJ, Kisely S. The gap in life expectancy from preventable physical illness in psychiatric patients in Western Australia: retrospective analysis of population based registers. *BMJ*. 2013;346:f2539.
51. Alam MF, Sarker M, Alam MT, Ahmed HU et al. Prevalence and associated factors of substance use in Bangladesh. National Institute of Mental Health, 2018; unpublished data.
52. Macintyre S, Hunt K, Sweeting HG. Gender differences in health: are things really as simple as they seem?. *Social Scie Medicine*, . 1996; 42 (4), 617-624. doi: 10.1016/0277-9536(95)00335-5
53. Matheson FI, Smith KL, Moineddin R, Dunn JR, Glazier RH. Mental health status and gender as risk factors for onset of physical illness over 10 years. *J Epidemiol Community Health*, 2014; 68(1), 64-70. doi: 10.1136/jech-2013-202838
54. Amann BL, Radua J, Wunsch C, König, B, Simhandl C. Psychiatric and physical comorbidities and their impact on the course of bipolar disorder: A prospective, naturalistic 4-year follow-up study. *Bipolar disorders*, 2017; 19(3), 225-234. doi:10.1111/bdi.12495
55. Deady M, Teesson M, Brady KT. Impact of substance use on the course of serious mental disorders. *Principles of addiction: comprehensive addictive behaviours and disorders*, 2013;1, 525-32.
56. Dickey B, Azeni H, Weiss R, Sederer L. Schizophrenia, substance use disorders and medical co-morbidity. *The Journal of Mental Health Policy and Economics*, 2000; 3(1), 27-33. doi: 10.1002/1099-176X(200003)3:1<27::AID-MHP67>3.0.CO;2-P
57. Toftdahl NG, Nordentoft M, Hjorthøj C. Prevalence of substance use disorders in psychiatric patients: a nationwide Danish population-based study. *Social Psychiat Psychiatric Epidemiology*, 2016; 51(1), 129-140. doi: 10.1007/s00127-015-1104-4
58. Tuchman R, Cuccaro M. Epilepsy and autism: neurodevelopmental perspective. *Current neurology and neuroscience reports*, 2011;11(4), 428-434. doi: 10.1007/s11910-011-0195-x
59. Van BlarikomnW, Tan IY, Aldenkamp AP, van Gennep, ATG. Epilepsy, intellectual disability, and living environment: a critical review. *Epilep Behavior*, 2006; 9(1)

60. De Hert M, Dekker JM, Wood D, Kahl KG, Holt RIG, Möller HJ. Cardiovascular disease and diabetes in people with severe mental illness position statement from the European Psychiatric Association (EPA), supported by the European Association for the Study of Diabetes (EASD) and the European Society of Cardiology (ESC). *European psychiatry*, 2009;24(6), 412-424. doi: 10.1016/j.eurpsy.2009.01.005

Appendix

আইডি নং :-

সাক্ষাৎকার গ্রহণের তারিখ : -----

Co-morbidity Among Patients with Severe Mental illness

Questionnaire



**National Institute of Mental Health & Hospital
Sher-e-Bangla Nagar, Dhaka-1207
Bangladesh**



জরুরী প্রয়োজনে যোগাযোগঃ

অধ্যাপক ডা. মো. ফারুক আলম - ০১৭১১-২৪৪৭৪৯

ডা. হেলাল উদ্দিন আহমেদ - ০১৭১২-২১৬৪৪৬

ডা. মো. তারিকুল আলম - ০১৮১৮-২২২২২৮

ডা. মেখলা সরকার - ০১৭১২-৪৫৮৯৭৭

Co-morbidity Among Patients with Severe Mental illness

জাতীয় মানসিক স্বাস্থ্য ইনস্টিটিউট ও হাসপাতাল

শেরে বাংলা নগর, ঢাকা।

উত্তরদাতাদের অ্যাসেন্ট ফর্ম

গবেষণা কাজের নাম : 'গুরুতর মানসিক রোগীদের মাঝে অন্যান্য রোগের প্রকোপ' বিষয়ক গবেষণা।

প্রধান গবেষক : অধ্যাপক ডাঃ মোঃ ফারুক আলম
পরিচালক ও অধ্যাপক
জাতীয় মানসিক স্বাস্থ্য ইনস্টিটিউট ও হাসপাতাল
শেরে বাংলা নগর, ঢাকা।

স্বাক্ষরের খোকা / খুকু,

শেরে বাংলা নগরস্থ জাতীয় মানসিক স্বাস্থ্য ইনস্টিটিউট ও হাসপাতাল, ঢাকা- এর পক্ষ থেকে 'গুরুতর মানসিক রোগীদের মাঝে অন্যান্য রোগের প্রকোপ' বিষয়ক গবেষণা কার্যক্রম চলছে। প্রাপ্ত তথ্যগুলি উন্নত মানসিক ও শারীরিক চিকিৎসা প্রদান ও দেশব্যাপী মানসিক ও শারীরিক স্বাস্থ্য সেবা প্রদানে পরিকল্পনা গ্রহণের জন্য প্রয়োজন হবে। প্রাপ্ত তথ্যগুলির গোপনীয়তা রক্ষা করা হবে এবং এ বিষয়ে শিশুদের কোন ক্ষতি হবে না।

গবেষণা কাজের জন্য তোমাকে কিছু প্রশ্ন করতে চাই। তুমি যদি সম্মতি প্রদান কর তবে তোমাকে মানসিকভাবে এবং প্রয়োজন হলে রোগ নির্ণয়ের জন্য শারীরিকভাবে পরীক্ষা এবং অন্যান্য প্রয়োজনীয় পরীক্ষা নিরীক্ষা করা হবে। এই সাক্ষাৎকারের জন্য কোন টাকা-পয়সার ব্যবস্থা রাখা হয়নি। প্রয়োজন হলে সাক্ষাৎকারের জন্য তোমাকে পুনরায় আসতে হতে পারে এবং এই পর্যায়ে প্রয়োজন বোধে চিকিৎসার ব্যবস্থা করা হবে। তোমার সাক্ষাৎকারের গোপনীয়তা রক্ষা করা হবে এবং কেবলমাত্র গবেষণা কাজে সম্পৃক্ত গবেষকরা এই বিষয়ে জানতে পারবেন। একজন উত্তরদাতা হিসাবে তুমি গবেষণা কাজে সম্মতি প্রদানপূর্বক সম্মতিপত্রে স্বাক্ষর দান অথবা বৃদ্ধাংশগুলির ছাপ প্রদান করলে আমি খুশি হবো।

তুমি ইচ্ছা করলে যে কোন প্রশ্ন করতে পার।

তোমাকে ধন্যবাদ।

উত্তরদাতার স্বাক্ষর / বৃদ্ধাংশগুলির চিহ্ন এবং নাম :

তারিখ :

সাক্ষীর স্বাক্ষর, নাম এবং ঠিকানা :

১।

তারিখ :

২।

তারিখ :

সাক্ষাৎকার গ্রহণকারীর স্বাক্ষর এবং নাম

তারিখ :

Co-morbidity Among Patients with Severe Mental illness

জাতীয় মানসিক স্বাস্থ্য ইনস্টিটিউট ও হাসপাতাল

শেরে বাংলা নগর, ঢাকা।

উত্তরদাতাদের অভিভাবকদের অবহিত মূলক লিখিত সম্মতিপত্র

গবেষণা কাজের নাম : গুরুতর মানসিক রোগীদের মাঝে অন্যান্য রোগের প্রকোপ বিষয়ক গবেষণা।

প্রধান গবেষক : অধ্যাপক ডাঃ মোঃ ফারুক আলম
পরিচালক ও অধ্যাপক
জাতীয় মানসিক স্বাস্থ্য ইনস্টিটিউট ও হাসপাতাল
শেরে বাংলা নগর, ঢাকা।

আসসালামু আলাইকুম / আদাব,

শেরে বাংলা নগরস্থ জাতীয় মানসিক স্বাস্থ্য ইনস্টিটিউট ও হাসপাতাল, ঢাকা- এর পক্ষ থেকে 'গুরুতর মানসিক রোগীদের মাঝে অন্যান্য রোগের প্রকোপ' বিষয়ক গবেষণা কার্যক্রম চলছে। প্রাপ্ত তথ্যগুলি উন্নত মানসিক ও শারীরিক চিকিৎসা প্রদান ও দেশব্যাপী মানসিক স্বাস্থ্য সেবা প্রদানে পরিকল্পনা গ্রহণের জন্য অত্যাবশ্যিক।

গবেষণা কাজের জন্য আপনার শিশুকে কিছু প্রশ্ন করতে চাই। আপনি যদি প্রয়োজন মনে করেন এবং সম্মতি প্রদান করেন তবে আপনার শিশুকে মানসিকভাবে এবং প্রয়োজন হলে রোগ নির্ণয়ের জন্য শারীরিকভাবে পরীক্ষা এবং অন্যান্য প্রয়োজনীয় পরীক্ষা নিরীক্ষা করা হবে। এই সাক্ষাৎকারের জন্য কোন পারিশ্রমিকের ব্যবস্থা রাখা হয়নি। প্রয়োজন হলে শিশুকে পুনরায় পরীক্ষা করা হবে। আপনার শিশুর সাক্ষাৎকারের গোপনীয়তা রক্ষা করা হবে এবং কেবলমাত্র গবেষণা কাজে সম্পৃক্ত গবেষকরা এই বিষয়ে জানতে পারবেন। গবেষণা কার্যক্রম চলার যে কোন পর্যায়ে আপনার শিশু অংশগ্রহণ নাও করতে পারে অথবা যে কোন প্রশ্নের উত্তর দিতে অপারগতা প্রকাশ করতে পারবে। একজন উত্তরদাতা হিসাবে আপনার শিশুকে গবেষণা কাজে অংশগ্রহণের সম্মতি প্রদানপূর্বক সম্মতিপত্রে স্বাক্ষর দান করলে আমি খুশি হবো।

আপনি ইচ্ছা করলে যে কোন প্রশ্ন করতে পারেন।

অভিভাবকের স্বাক্ষর / বৃদ্ধাংশগুলির চিহ্ন এবং নাম :

তারিখ :

সাক্ষীর স্বাক্ষর, নাম এবং ঠিকানা :

১।

তারিখ :

২।

তারিখ :

সাক্ষাৎকার গ্রহণকারীর স্বাক্ষর এবং নাম

তারিখ :

Co-morbidity Among Patients with Severe Mental illness

জাতীয় মানসিক স্বাস্থ্য ইনস্টিটিউট ও হাসপাতাল

শেরে বাংলা নগর, ঢাকা।

উত্তরদাতাদের অবহিতমূলক লিখিত সম্মতিপত্র

গবেষণা কাজের নাম : 'গুরুতর মানসিক রোগীদের মাঝে অন্যান্য রোগের প্রকোপ' বিষয়ক গবেষণা।

প্রধান গবেষক : অধ্যাপক ডাঃ মোঃ ফারুক আলম
পরিচালক ও অধ্যাপক
জাতীয় মানসিক স্বাস্থ্য ইনস্টিটিউট ও হাসপাতাল
শেরে বাংলা নগর, ঢাকা।

আসসালামু আলাইকুম / আদাব,

শেরে বাংলা নগরস্থ জাতীয় মানসিক স্বাস্থ্য ইনস্টিটিউট ও হাসপাতাল, ঢাকা- এর পক্ষ থেকে 'গুরুতর মানসিক রোগীদের মাঝে অন্যান্য রোগের প্রকোপ' বিষয়ক গবেষণা কার্যক্রম চলছে। প্রাপ্ত তথ্যগুলি উন্নত মানসিক ও শারীরিক চিকিৎসা প্রদান ও দেশব্যাপী মানসিক স্বাস্থ্য সেবা প্রদানে পরিকল্পনা গ্রহণের জন্য প্রয়োজন হবে। প্রাপ্ত তথ্যগুলির গোপনীয়তা রক্ষা করা হবে এবং এ বিষয়ে আপনার কোন ক্ষতি হবে না।

গবেষণা কাজের জন্য আপনাকে কিছু প্রশ্ন করতে চাই। আপনি যদি সম্মতি প্রদান করেন তবে আপনাকে মানসিকভাবে এবং প্রয়োজন হলে রোগ নির্ণয়ের জন্য শারীরিকভাবে এবং অন্যান্য প্রয়োজনীয় পরীক্ষা নিরীক্ষা করা হবে। এই সাক্ষাৎকারের জন্য কোন পারিশ্রমিকের ব্যবস্থা রাখা হয়নি। প্রয়োজন হলে সাক্ষাৎকারের জন্য আপনাকে পুনরায় আসতে হতে পারে এবং এই পর্যায়ে প্রয়োজন বোধে চিকিৎসার ব্যবস্থা করা হবে। আপনার নামও সাক্ষাৎকারের গোপনীয়তা রক্ষা করা হবে এবং কেবলমাত্র গবেষণা কাজে সম্পৃক্ত গবেষকরা এই বিষয়ে জানতে পারবেন।

গবেষণা কার্যক্রম চলার যে কোন পর্যায়ে আপনি অংশগ্রহণ নাও করতে পারেন অথবা যে কোন প্রশ্নের উত্তর দিতে অপারগতা প্রকাশ করতে পারবেন। একজন উত্তরদাতা হিসাবে আপনি গবেষণা কাজে সম্মতি প্রদানপূর্বক সম্মতিপত্রে স্বাক্ষর দান অথবা বৃদ্ধাংশগুলির ছাপ প্রদান করতে আপনাকে অনুরোধ করছি।

আপনি ইচ্ছা করলে যে কোন প্রশ্ন করতে পারেন।

আপনার সহযোগীতার জন্য ধন্যবাদ

উত্তরদাতার স্বাক্ষর / বৃদ্ধাংশগুলির চিহ্ন এবং নাম :

তারিখ :

সাক্ষীর স্বাক্ষর, নাম এবং ঠিকানা :

১।

তারিখ :

২।

তারিখ :

সাক্ষাৎকার গ্রহণকারীর স্বাক্ষর এবং নাম

তারিখ :

Co-morbidity Among Patients with Severe Mental illness

জাতীয় মানসিক স্বাস্থ্য ইনস্টিটিউট ও হাসপাতাল

শেরে বাংলা নগর, ঢাকা।

উত্তরদাতাদের অবহিতমূলক লিখিত সম্মতিপত্র (উত্তরদাতা তথ্য প্রদানে সড়াম না হলে অভিভাবকের সম্মতিপত্র)

গবেষণা কাজের নাম : 'গুরুতর মানসিক রোগীদের মাঝে অন্যান্য রোগের প্রকোপ' বিষয়ক গবেষণা।

প্রধান গবেষক : অধ্যাপক ডাঃ মোঃ ফারুক আলম
পরিচালক ও অধ্যাপক
জাতীয় মানসিক স্বাস্থ্য ইনস্টিটিউট ও হাসপাতাল
শেরে বাংলা নগর, ঢাকা।

আসসালামু আলাইকুম / আদাব,

শেরে বাংলা নগরস্থ জাতীয় মানসিক স্বাস্থ্য ইনস্টিটিউট ও হাসপাতাল, ঢাকা- এর পক্ষ থেকে 'গুরুতর মানসিক রোগীদের মাঝে অন্যান্য রোগের প্রকোপ' বিষয়ক গবেষণা কার্যক্রম চলছে। প্রাপ্ত তথ্যগুলি উন্নত মানসিক ও শারীরিক চিকিৎসা প্রদান ও দেশব্যাপী মানসিক স্বাস্থ্য সেবা প্রদানে পরিকল্পনা গ্রহণের জন্য প্রয়োজন হবে। প্রাপ্ত তথ্যগুলির গোপনীয়তা রক্ষা করা হবে এবং এ বিষয়ে আপনার বা আপনার রোগীর (সম্ভাব্য) কোন ক্ষতি হবে না।

গবেষণা কাজের জন্য আপনাকে কিছু প্রশ্ন করতে চাই। আপনি যদি সম্মতি প্রদান করেন তবে আপনার রোগীকে (সম্ভাব্য) মানসিকভাবে এবং প্রয়োজন হলে রোগ নির্ণয়ের জন্য শারীরিকভাবে এবং অন্যান্য প্রয়োজনীয় পরীক্ষা নিরীক্ষা করা হবে। এই সাক্ষাৎকারের জন্য কোন পারিশ্রমিকের ব্যবস্থা রাখা হয়নি। প্রয়োজন হলে সাক্ষাৎকারের জন্য আপনাকে পুনরায় আসতে হতে পারে এবং এই পর্যায়ে প্রয়োজন বোধে আপনার রোগীর(সম্ভাব্য) চিকিৎসার ব্যবস্থা করা হবে। আপনার নামও সাক্ষাৎকারের গোপনীয়তা রক্ষা করা হবে এবং কেবলমাত্র গবেষণা কাজে সম্পৃক্ত গবেষকরা এই বিষয়ে জানতে পারবেন।

গবেষণা কার্যক্রম চলার যে কোন পর্যায়ে আপনি অংশগ্রহণ নাও করতে পারেন অথবা যে কোন প্রশ্নের উত্তর দিতে অপারগতা প্রকাশ করতে পারবেন। একজন উত্তরদাতা হিসাবে আপনি গবেষণা কাজে সম্মতি প্রদানপূর্বক সম্মতিপত্রে স্বাক্ষর দান অথবা বৃদ্ধাংশগুলির ছাপ প্রদান করতে আপনাকে অনুরোধ করছি।

আপনি ইচ্ছা করলে যে কোন প্রশ্ন করতে পারেন।

আপনার সহযোগীতার জন্য ধন্যবাদ

উত্তরদাতার অভিভাবকের স্বাক্ষর / বৃদ্ধাংশগুলির চিহ্ন এবং নাম :

তারিখ :

সাক্ষীর স্বাক্ষর, নাম এবং ঠিকানা :

১।

তারিখ :

২।

তারিখ :

সাক্ষাৎকার গ্রহণকারীর স্বাক্ষর এবং নাম

তারিখ :

Co-morbidity Among Patients with Severe Mental illness

জাতীয় মানসিক স্বাস্থ্য ইনস্টিটিউট ও হাসপাতাল

শেরে বাংলা নগর, ঢাকা।

আর্থ-সামাজিক এবং সংশ্লিষ্ট প্রশ্নমালা

আইডি নং: _____

আপনার মোবাইল/ফোন নাম্বার লিখুন: _____

নিম্নলিখিত প্রশ্নগুলির উত্তর লিখুন (বক্সে) অথবা সঠিক উত্তরে ঠিক চিহ্ন দিন।

১. আপনার বয়স কত?

২. আপনার লিঙ্গ কি?

১. মহিলা

২. পুরুষ

৩. অন্যান্য

৩. আপনি কোন ধর্ম অনুসরণ করেন?

১. ইসলাম

২. হিন্দু ধর্ম

৩. খ্রীষ্টান ধর্ম

৪. বৌদ্ধ ধর্ম

৫. অন্যান্য

৪. আপনি কতদূর পড়ালেখা করেছেন?

১. কোন পড়ালেখা করিনি

২. স্বাক্ষরজ্ঞান আছে

৩. প্রাথমিক

৪. মাধ্যমিক

৫. উচ্চ মাধ্যমিক

৬. স্নাতক

৭. স্নাতকোত্তর

৮. অন্যান্য (উল্লেখ করুন -----)

৫. আপনি বর্তমানে কোন পেশায় নিয়োজিত রয়েছেন?

১. বেকার

২. ব্যবসায়ী

৩. কৃষিকাজ

৪. চাকুরীজীবী

৫. গৃহিনী

৬. গৃহকর্মী

৭. শ্রমিক/দিনমজুর

৮. ছাত্র/ছাত্রী

৯. অন্যান্য (উল্লেখ করুন -----)

৬. আপনার মানসিক রোগ হওয়ার পূর্বে কোন পেশায় নিয়োজিত ছিলেন?

১. বেকার

২. ব্যবসায়ী

৩. কৃষিকাজ

৪. চাকুরীজীবী

৫. গৃহিনী

৬. গৃহকর্মী

৭. শ্রমিক

৮. ছাত্র/ছাত্রী

৯. অন্যান্য (উল্লেখ করুন -----)

৭. আপনার পরিবারের ধরন কি?

১. যৌথ পরিবার

২. একক পরিবার

৮. আপনার পরিবারের সদস্য সংখ্যা?

৯. আপনার পরিবারের মাসে মোট কত খরচ হয়?

১০. আপনার বৈবাহিক/বিবাহিত অবস্থা কি?

১. বিবাহিত

২. অবিবাহিত

৩. স্বামী-স্ত্রী আলাদা থাকেন
৫. অন্যান্য (উল্লেখ করুন -----)

৪. ডিভোর্স/তালাকপ্রাপ্ত

১১. জানামতে আপনার কি কোন শারিরীক সমস্যা আছে?

১. হ্যাঁ ২. না

৩. হলে কি কি রোগ -----

হ্যাঁ হলে কতদিন যাবত ভুগছেন: মাস/বছর

১২. আপনার পরিবারে কারও দীর্ঘমেয়াদী কোন শারিরীক সমস্যা আছে?

১. হ্যাঁ ২. না

হ্যাঁ হলে কতদিন যাবত ভুগছেন: মাস/বছর

১৩. বর্তমানে মানসিক রোগের জন্য কি কি ঔষধ খাচ্ছেন?

১৪. বর্তমানে মানসিক রোগের জন্যে কতদিন ঔষধ খাচ্ছেন?

----- দিন/মাস/বছর

নির্গীত রোগ
(মানসিক রোগ বিশেষজ্ঞ কর্তৃক পূরণযোগ্য)

রোগের নাম:

ICD-10	DSM-IVTR

স্বাক্ষর -----

তারিখ-----

Report on Physical comorbidity in person with severe mental illness in Bangladesh



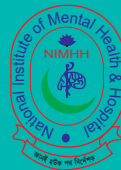
Ministry of Health and Family Welfare
Government of the People's Republic of Bangladesh

Supported by



Non-Communicable Disease Control Program of Directorate General of
Health Services (DGHS) under Ministry of Health & Family Welfare (MoH&FW).

Implemented by



National Institute of Mental Health (NIMH), Dhaka
Sher-e-Bangal Nagar, Dhaka-1207, Bangladesh
www.nimh.gov.bd